

**Scopophilia**

Single-channel video installation

Projection, 1 DVD (PAL), colour, 30 seconds looped

Directed by Neil Hunt and Kye Wilson

UK, 2009

Video installation:

1 Projector (or large LCD / plasma screen)

1 DVD player

1 Speaker system (stereo x2)



Simulation of the video installation

**Scream**

Single-channel video installation

Projection, 1 DVD (PAL), colour, 30 seconds looped

Directed by Denise Callender, Neil Hunt and Kye Wilson

UK, 2009

Video installation:

1 Projector (or large LCD / plasma screen)

1 DVD player

1 speaker system (stereo x2)



Simulation of the video installation

**Anomaly**

Single-channel video installation

Projection, 1 DVD (PAL), colour, 12:00 minutes looped, silent\*

Directed by Kye Wilson

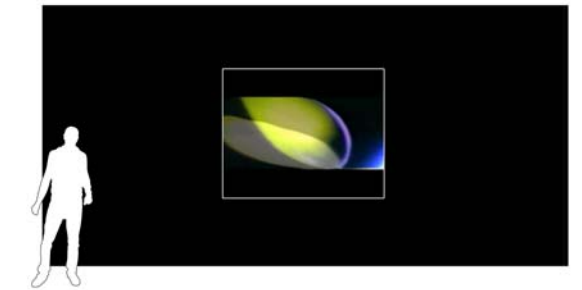
UK, 2007

Video installation:

1 Projector (or large LCD / plasma screen)

1 DVD player

\*Note: There is no audio content for this video



Simulation of the video installation

### Vanishing Twin

Live art video installation

Two live performers\* (60:00 minutes performance), projection, 1 DVD (PAL), colour, 8:00 minutes looped  
Directed by Denise Callender, Neil Hunt and Kye Wilson  
UK, 2007

Video installation:

- 1 Projector (or large LCD / plasma screen)
- 1 DVD player
- 1 Speaker system (stereo x2) – 5.1 surround sound system preferred
- 2 live performers

\*Notes: Director's to supply instructions for performers to follow, prior to the performance.

A DVD of 'Vanishing Twin' live art video installation documentary (length: 05:24 minutes), as shown at 'Repetition' exhibition is also available. To be used as a reference aid i.e. to show what the final site-specific installation set-up looks like; or be shown as part of future 'Vanishing Twin' exhibitions on a monitor with headphones.



Installation detail as shown at 'Repetition' exhibition



Simulation of the video installation

### Vanishing Twin

Triptych multi-channel video installation

Projection, 3 DVDs (PAL), colour, 8:00 minutes looped  
Directed by Denise Callender, Neil Hunt and Kye Wilson  
UK, 2007

Video installation:

- 3 Projectors (or large LCD / plasma screens)
- 3 DVD players
- 1 DVD synchroniser (or synchronise DVD players manually)
- 1 Speaker system (stereo x2) – 5.1 surround sound system preferred



Installation detail as shown at 'Pandemonium' exhibition



Simulation of the video installation

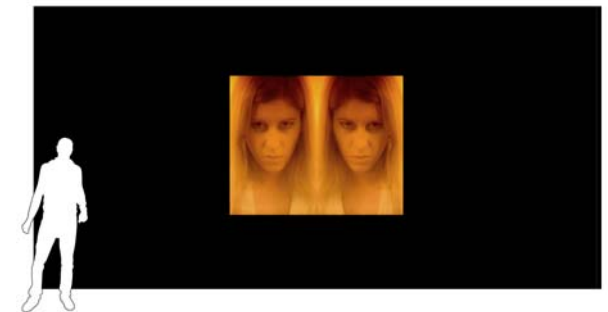
### Vanishing Twin

Single-channel video installation

Projection, 1 DVD (PAL), colour, 8:00 minutes looped  
Directed by Denise Callender, Neil Hunt and Kye Wilson  
UK, 2007

Video installation:

- 1 Projector (or large LCD / plasma screen)
- 1 DVD player
- 1 Speaker system (stereo x2)



Simulation of the video installation

**Faces of a Steelpan Festival - 'Faces'**

Single-channel video installation

Projection, 1 DVD (PAL), colour, 4:00 minutes looped, silent\*  
Directed by Denise Callender, Neil Hunt and Kye Wilson  
UK, 2007

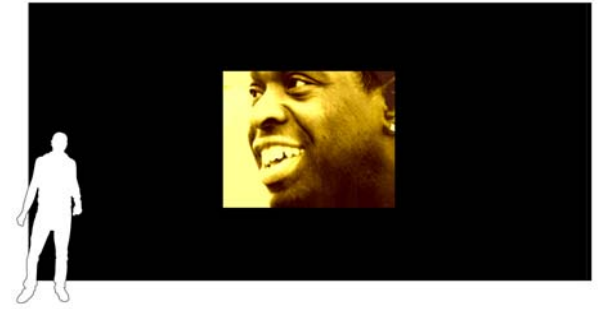
Video installation:

- 1 Projector (or large LCD / plasma screen)
- 1 DVD player

\*Note: There is no audio content for this video



Installation detail as shown at Aspex  
Gallery, Gunwharf Quays,  
Portsmouth, UK (as part of the year long  
'Voyage East' community celebrations)



Simulation of the video installation

**Faces of a Steelpan Festival - 'Triptych'**

Single-channel video installation

Projection, 1 DVD (PAL), colour, 7:00 minutes looped, silent\*  
Directed by Denise Callender, Neil Hunt and Kye Wilson  
UK, 2007

Video installation:

- 1 Projector (or large LCD / plasma screen)
- 1 DVD player

\*Note: There is no audio content for this video



Simulation of the video installation

**The Kiss Series**

**(Trace, Virus, Scream, The Kiss, Resurrection)**

5-screen multi-channel video installation

Projection, 5 DVDs (PAL), colour, 1:00 minute (each film approx.)\* looped

Directed by Denise Callender, Neil Hunt and Kye Wilson

UK, 2006

Video installation:

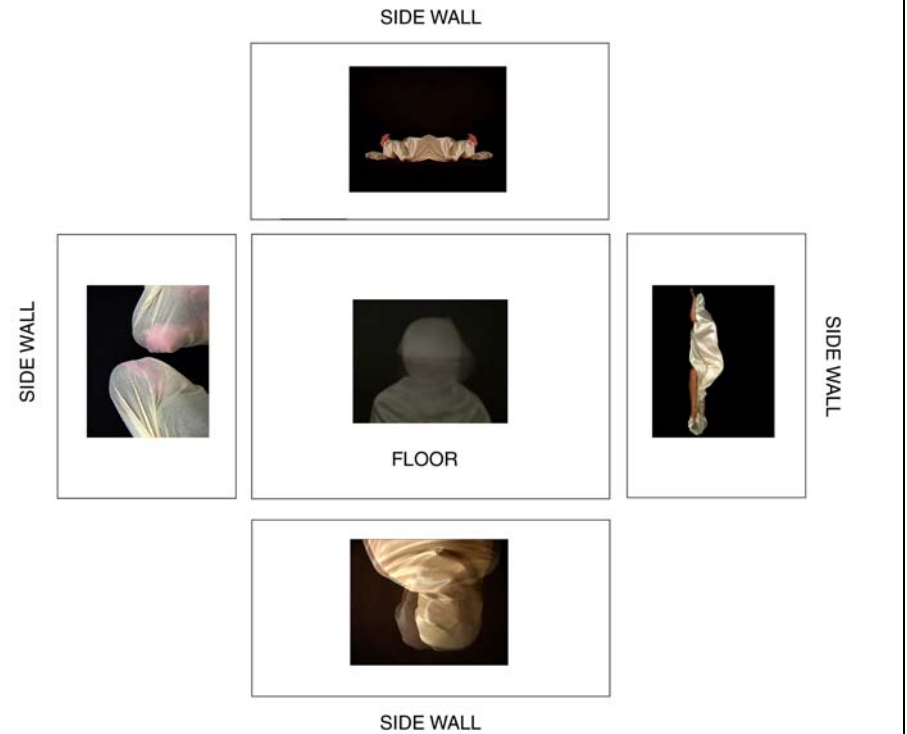
5 Projectors (or large LCD / plasma screens)

5 DVD players

1 DVD synchroniser (or synchronise DVD players)

1 Speaker system (stereo x2)\* – 5.1 surround sound system preferred

\*Note: Director's will advise which individual 'The Kiss series' film soundscape is to be played



**Trimester**

Sculptural Video Installation

Projection, 1 DVD (PAL), colour, 7:58 minutes looped

Directed by Helena Eflerova and Kye Wilson

UK, 2009

Video installation:

1 Projector

1 DVD player

1 Speaker system (stereo x2)

Felt sculpture (supplied by artists)



Installation detail as shown at Space gallery, University of Portsmouth

